

ANALYTICS COMMUNITY OF PRACTICE

MONTHLY NEWSLETTER



Hello, Analytics Community of Practice Members, This month we are highlighting new ACP member Mary Prouty, Digital Accessibility Developer. Mary is additionally presenting BIWorkshare on August 30th, so make sure to tune in! Our data Viz of the Month explores the "Tom Hanks Cinematic Universe," full of details about Tom Hanks movies. We also have a great list of analytics related events! Finally, this month we also have a [Tip of the Month](#) for PowerBI users.

ARTICLES

- [ACP Featured Member](#) 2
- [Viz of the Month](#) 4
- [Events](#) 5-7
- [Contributing to the Community](#) 10

ACP FEATURE MEMBER:

Mary Prouty

Role at USC: Digital Accessibility Director

Are there any specific programming languages or technologies that you find particularly useful for creating accessible analytics?

Generally, I find it more helpful to be in the mindset of creating accessible analytics than it is to use any one technology, but it can be valuable to know a scripting

language like Python to add a layer of pre-processing to your data. I often use node.js for scripting just because I'm more familiar with JavaScript. Pre-processing your data can help to simplify your views in many use cases, which is an important part of creating accessible data visualizations.

Can you share any success stories or achievements that you are particularly proud of in your work on accessible analytics?

I'm currently creating a couple of accessibility metrics dashboards in Tableau that I'm excited about. Not only are these dashboards accessible themselves, but they report on common accessibility issues. I think they're a nice representation of how you can create accessible analytics that are also beautiful and easy to use for everyone.

How do you stay up-to-date with the latest advancements and best practices in accessible analytics?

I'm currently creating a couple of accessibility metrics dashboards in Tableau that I'm excited about. Not only are these dashboards accessible themselves, but they report on common accessibility issues. I think they're a nice representation of how you can create accessible analytics that are also beautiful and easy to use for everyone.



How did you learn about the ACP?

Caroline Maulana introduced me to the ACP!

What other reporting software are you interested in learning?

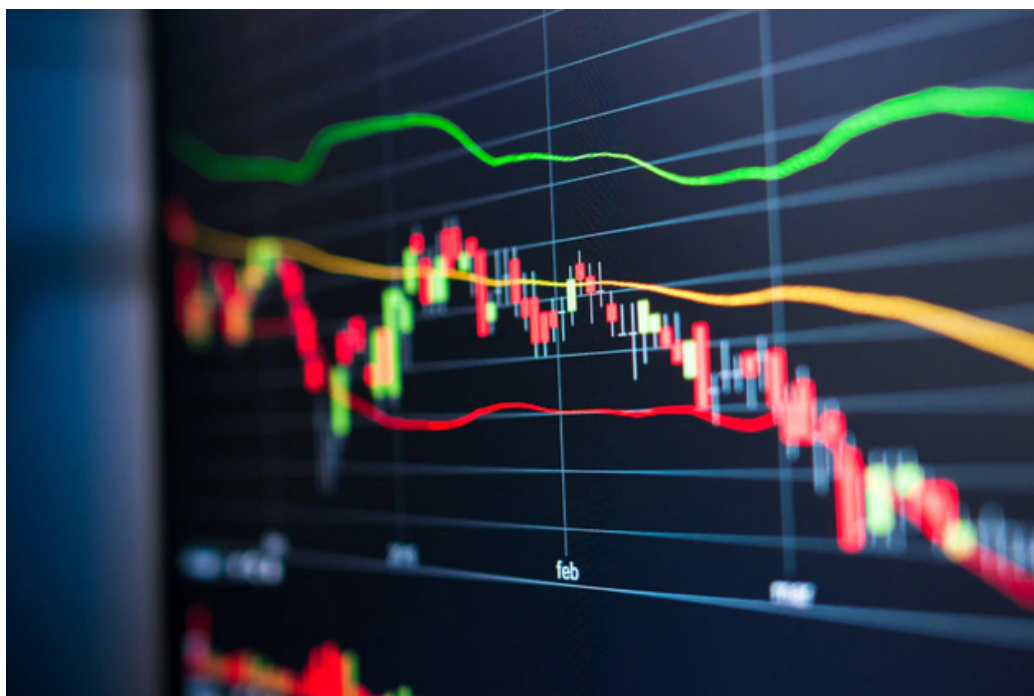
I'm interested in learning more about creating reports in Power BI. When I worked at Microsoft, I did some development on a data pipeline that fed into a Power BI report, but I haven't created reports in Power BI myself.

What/who inspires you?

My brother Jeff has always inspired me. He is one of the most genuine, inclusive, and intelligent people I know. He's inspired me from a young age to think critically as a problem solver, and more importantly to use my problem-solving skills in an impactful way that can help people live their best lives.

Book recommendations (work-related or not):

A Piece of the World by Christina Baker Cline. This is a fictional, non-work-related book, but does relate to accessibility in the sense that the main character has a chronic illness that creates challenges for her throughout the novel.



VIZ OF THE MONTH

The Tom Hanks Cinematic Universe

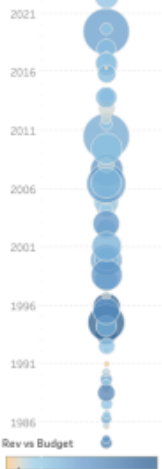
This month's Viz of the Month is inspired by no other than the actor, Tom Hanks. Created by tableau user @HipsterVizNinja, it explores the answer to life's greatest desire: being able to see which movies Tom Hanks has starred in along with their budget, box office info, other actors and how they're related. Now there exists a Tableau visualization that answers this!

THE TOM HANKS CINEMATIC UNIVERSE

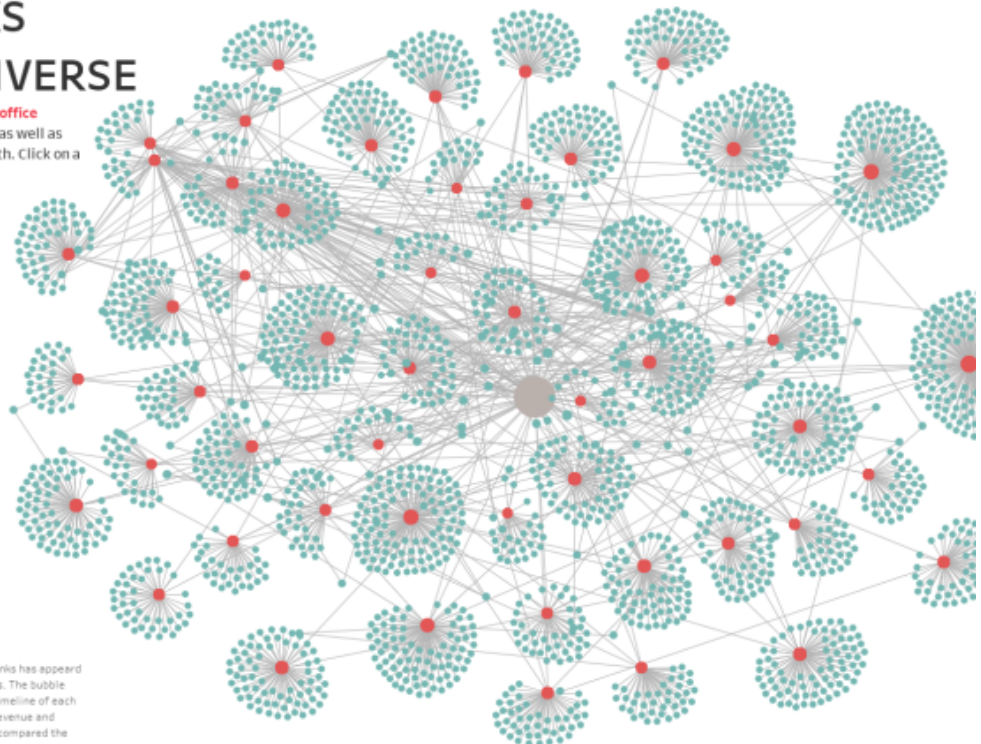
Explore the network graph to discover the **box office movie releases** in which Tom Hanks appears in as well as the **other credited actors** he has performed with. Click on a movie to highlight all actors and hover for more details

Looking for a specific movie?
Highlight Title

Only show Actors with multiple movies?
 Show All
 Multiple movies only



Since 1984's *Splash*, Tom Hanks has appeared in over 50 box office releases. The bubble chart to the left shows the timeline of each release sized by box office revenue and colored by how it performed compared to the film's budget.



data: <https://www.kaggle.com/SeanM194/actors-in-hanks>

Created by: Sean M
@HipsterVizNinja

This visualization explores the various movies that Tom Hanks has appeared in along with box office information such as the number of total actors, budget, revenue earned, and amount exceeding the budget. You can see a web of the actors he's co-starred with.

[Click here to explore](#)

DASHBOARD PERFORMANCE BEST PRACTICES

AUG. 8TH 3:00PM - 4:00PM EST

LOCATION: Tableau Virtual Webinar

This intermediate Tableau Success Connector session is primarily designed for working professionals who are currently Chief Analytics Officers, Project Managers, Community Leaders or Analytics Champions. This session provides an overview of:

- Factors affecting dashboard performance
- Tips to improve dashboard performance
- Best practices for testing dashboard performance
- Additional resources

[Register now](#)

BIG DATA AND HADOOP TRAINING IN COLUMBIA, SC

AUG. 22TH 9:00AM - 5:00PM

LOCATION: Columbia, SC 29203

The course provides an in-depth understanding of Hadoop framework, HDFS, and Hadoop cluster including Scoop, Flume, Pig, Hive, and Impala. You will learn about cluster management solutions, core Hadoop distribution, and Cloudera manager. It includes 4

industry-based projects and is aligned to Cloudera's CCAH 'CCA-500' certification. This course is best suited for IT professionals, data engineers, system administrators, and cloud administrators.

[Register now](#)

Price: \$1599 (virtual), \$2599 (in-person)

**BIWORKSHARE: UNLOCKING INCLUSION
THROUGH PROGRAM ACCESSIBILITY - PART 1
PRESENTED BY MARY PROUTY**

AUG. 30TH 1:00PM - 2:00PM

LOCATION: Microsoft Teams Virtual Event

The Authoring Accessible Dashboards in Tableau training presented by Mary Prouty will cover how to create views and dashboards in Tableau Desktop that can be used by people with different disabilities. Accessibility concepts will include color contrast, focus order, alternative text, responsive design, and more. Participants will learn why and how accessibility in Tableau can enable people with various abilities to gather insights from data visualizations.



[Register now](#)

WEBINAR: ASK ME ANYTHING: COGNOS ANALYTICS - SEPT. EDITION

SEP. 7TH 9:30AM - 10:30PM

LOCATION: IBM Virtual Webinar

Join the IBM Cognos Analytics Product Management team live at the beginning of each month to ask and get answers to your most pressing Cognos Analytics questions. If you like product roadmap sneak previews, don't worry - we'll be sharing those, too.

Register now and join us for a lively session where you can ask anything about Cognos!

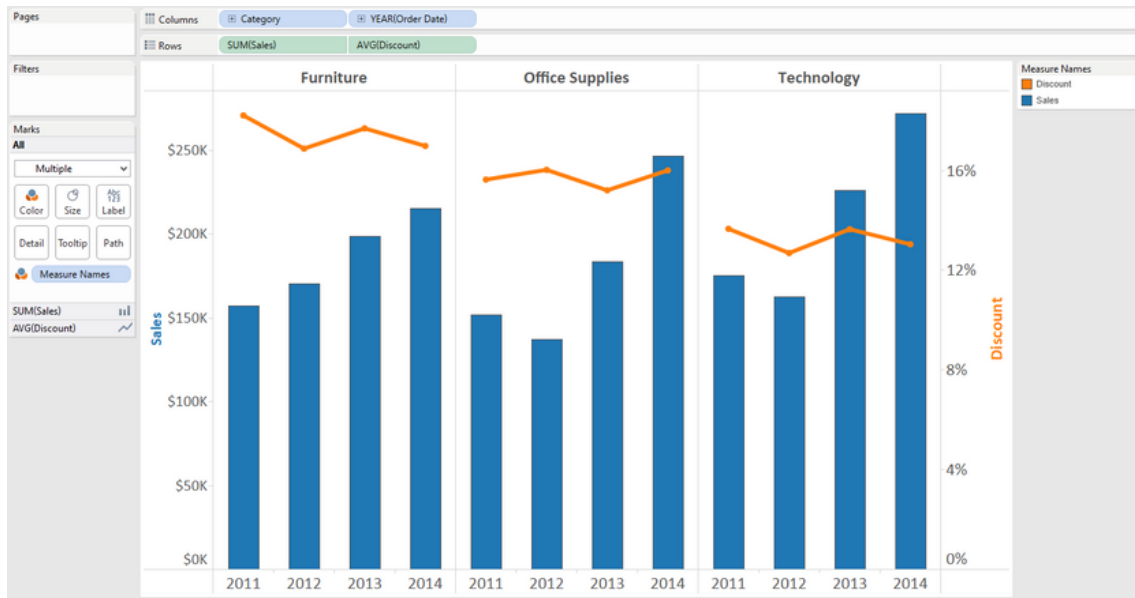
- Learn about the latest features
- Ask questions
- Connect with the product management team

[Register now](#)



TIP OF THE MONTH

Using Dual Axis Charts



In Tableau, using dual axis charts is a great method to visualize two different measures, each with a unique scale in a single graph. These are super useful when you need to make a comparison between two measures that aren't directly related to each other. To start, drag your first measure to the Rows or Columns shelf (depending on whether you want a horizontal or vertical axis). Then, drag your second measure to the right of the first measure in the Rows or Columns shelf. You'll then see two separate graphs. Next, right click on the axis of the second measure and click on "Dual Axis", then you've got a Dual Axis Chart. Next, to make sure your chart isn't misleading, right click on either axis and click on "Synchronize Axis" which will align the scale of your two measures.

CONTRIBUTING TO THE COMMUNITY

Did You Know?

The new ACP [Microsoft Teams Site](#) is a great way to spread the word about coming events and opportunities! In an effort to reduce email traffic, we encourage you all to send communications via the Microsoft Teams Site. All events shared will also be included in the newsletter, which will continue to go out via the listserv.

As always, the following links and email addresses can be used for the specified purposes:

- To contact the list owner: ANALYTICS-request@LISTSERV.SC.EDU
- [Click here](#) to join the Analytics Community of Practice

Please send us visualizations suggestions for the viz of the month!

If you would like to suggest a visualization for next months viz of the month be sure to share it with us at any one of our communication channels! We are software and tool agnostic so you can send us vizzes from across the spectrum of BI technologies. The visualization can be something you created, a coworker, or something you found. We look forward to seeing your suggestions!

LOOKING FOR MORE EVENTS?

University Libraries offer students, faculty, staff and the entire community opportunities to engage with data. They have a new list of data related events every week, just follow the link below!

[Click here for more events](#)